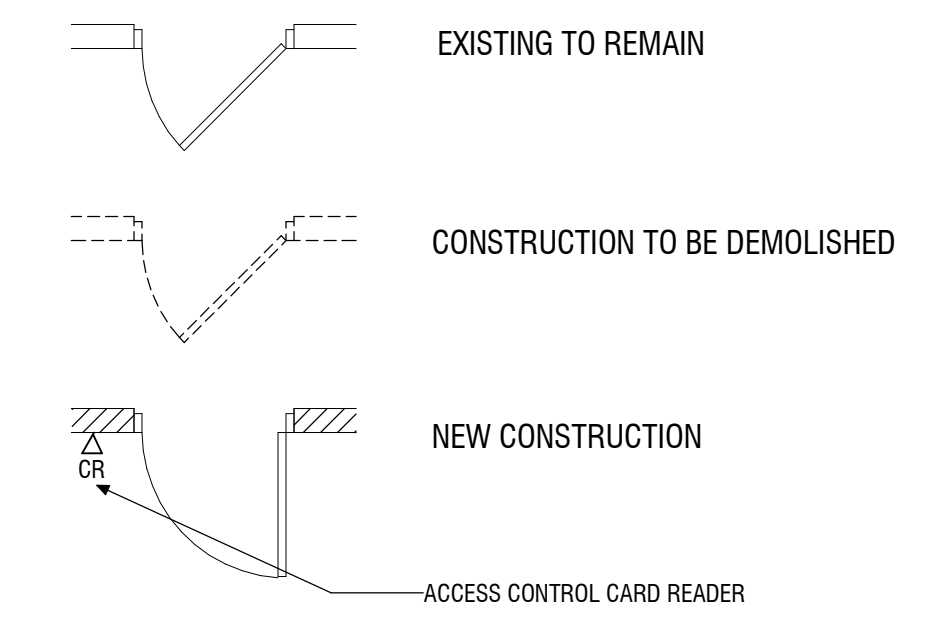


**FIRST FLOOR PLAN**  
SCALE: 3/16" = 1'-0"

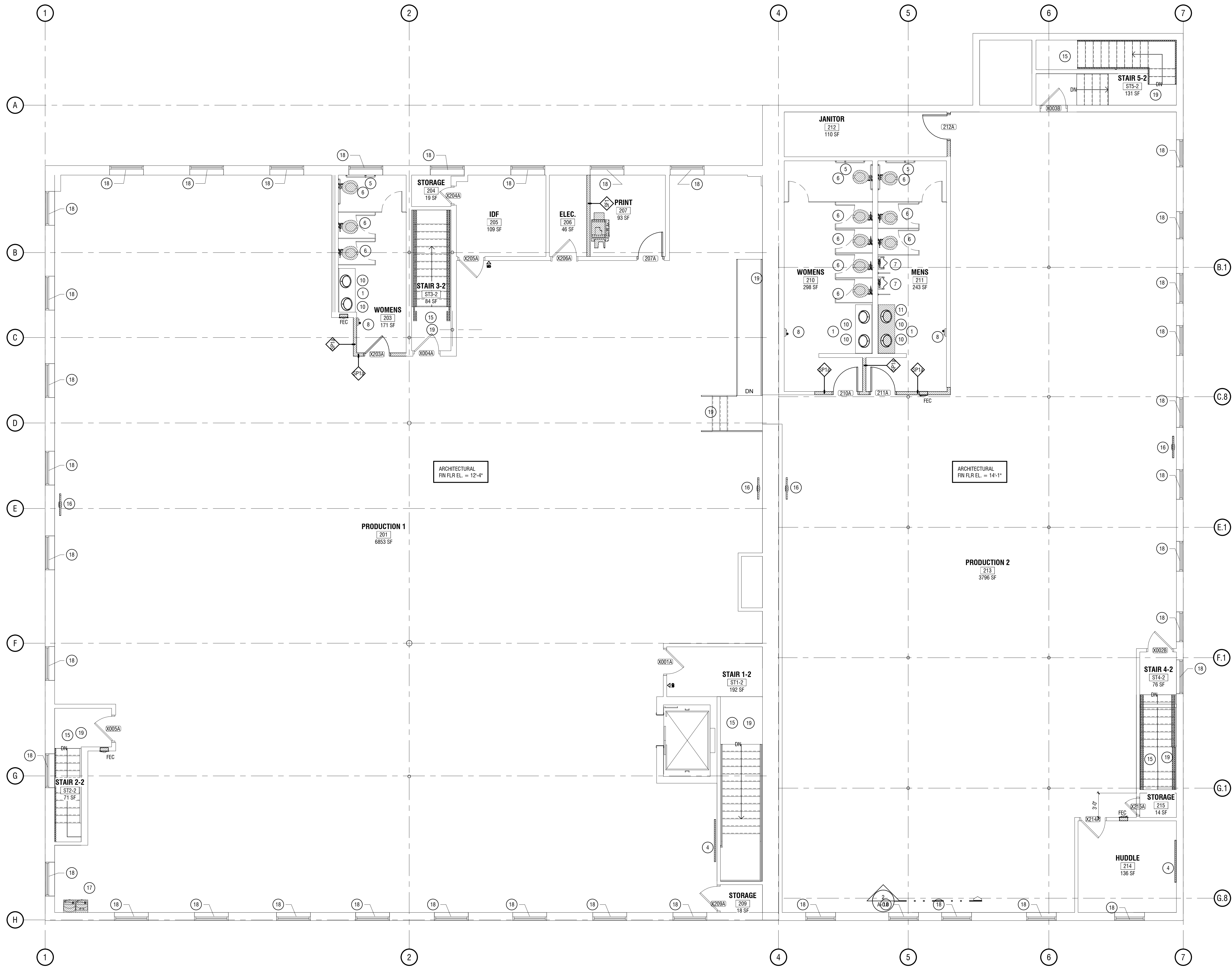
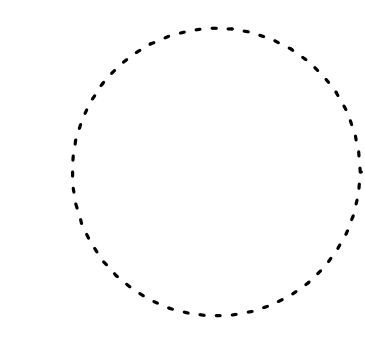
CONSTRUCTION NOTES	
NUMBER	NOTE
1	4'-0" X FULL LENGTH OF COUNTER (6'-7") MIRROR
2	SUSPENDED PROJECTOR
3	MOTORIZED PROJECTION SCREEN
4	VISUAL DISPLAY BOARD BY OTHERS. PROVIDE BLOCKING
5	18" VERTICAL GRAB BAR
6	NEW FLOOR MOUNTED FLUSH VALVE TOILET
7	NEW URINAL
8	ELECTRIC HAND DRYER
9	ELECTRICAL FLOOR BOXES
10	NEW FAUCET ON EX SINK
11	COUNTERTOP TO MATCH EXISTING TOILET PARTITIONS
12	LIGHTED SIGN
13	GRAPHIC WALL BY OTHERS
14	STEEL PIPE HANDRAILS/ SEE SHEET G-1.1 FOR DETAIL / PNT-2
15	WALL MOUNTED TV PROVIDED BY OTHERS. PROVIDE BLOCKING
16	DRAWING FOUNTAIN W/ BOTTLE FILLER
17	CHAIR OPERATED WINDOW SHADE 1% - SEE FINISH DESCRIPTION LEGEND
18	PAINT EXISTING HANDRAILS W/ PNT-2



**1732 LYTER DRIVE DRIVE FIT OUT**  
1732 LYTER DRIVE, JOHNSTOWN, PA  
**FIRST FLOOR PLAN**

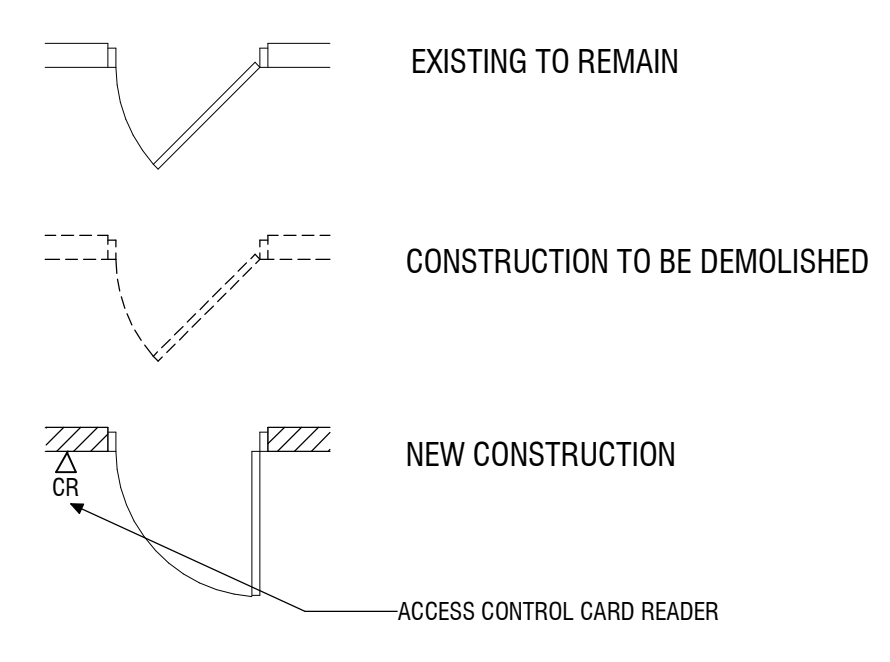


**A-1.1**



**CONSTRUCTION NOTES.**

NUMBER	NOTE
1	4'-0" X FULL LENGTH OF COUNTER (8'-7") MIRROR
4	VISUAL DISPLAY BOARD BY OTHERS. PROVIDE BLOCKING
5	18" VERTICAL GRAB BAR
6	NEW FLOOR MOUNTED FLUSH VALVE TOILET
7	NEW URINAL
8	ELECTRIC HAND DRYER
10	NEW FAUCET ON EX SINK
11	COUNTERTOP TO MATCH EXISTING TOILET PARTITIONS
15	STEEL PIPE HANDRAILS/ SEE SHEET G-1.1 FOR DETAIL / PNT-2
16	WALL MOUNTED TV PROVIDED BY OTHERS. PROVIDE BLOCKING
17	DRINKING FOUNTAIN W/ BOTTLE FILLER
18	CHAIN OPERATED WINDOW SHADE/ 1"- SEE FINISH DESCRIPTION LEGEND
19	PAINT EXISTING HANDRAILS W/ PNT-2



**02 SECOND FLOOR**  
SCALE: 3/16" = 1'-0"

**1732 LYTER DRIVE FIT OUT**  
1732 LYTER DRIVE, JOHNSTOWN, PA  
**SECOND FLOOR PLAN**



**A-1.2**