

Nees Avenue & Walter Avenue Intersection

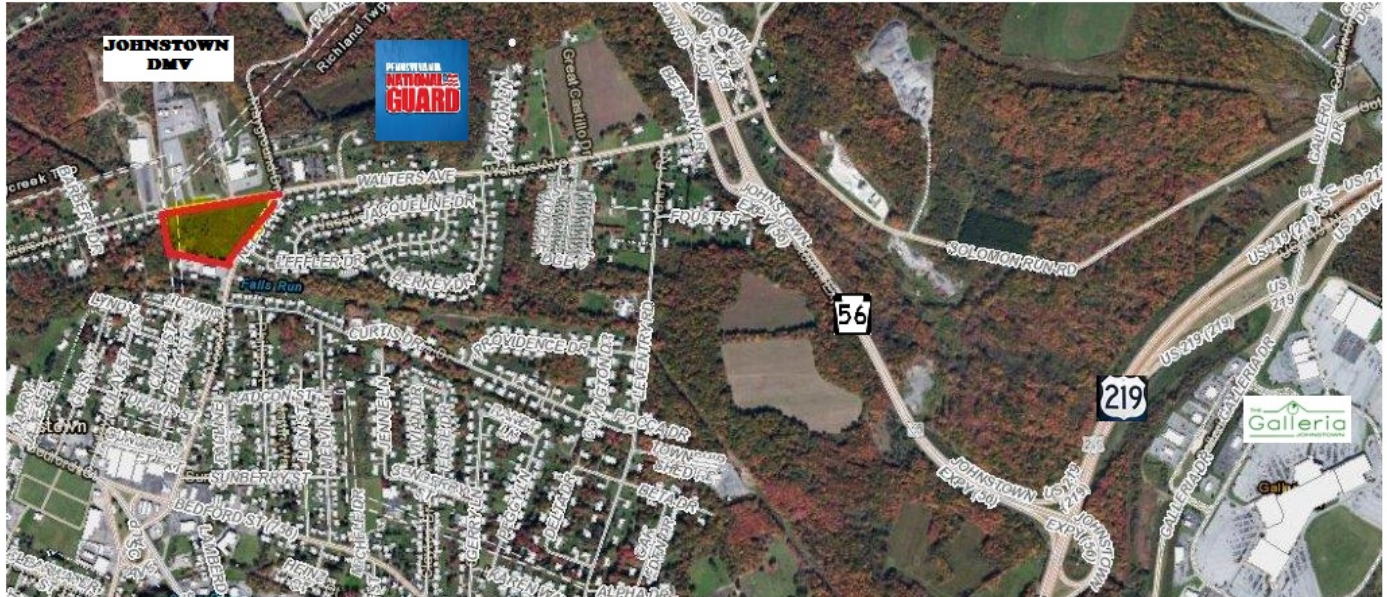
FOR SALE

\$550,000

Nees Avenue & Walter Avenue Intersection

Johnstown, PA 15904

Cambria County



Property Description

- Lot Size: 9.03 Acres
- Zoning: C-3 Office Commercial
- Water: Public
- Sewage: Public
- Municipality: Richland

Comments

Near the Johnstown DMV and National Guard!



Listing Broker: Bill Trevorrow

CCN Real Estate

214 College Park Plaza

Suite 205A

btrevorrow@atlanticbb.net

814.262.7970